

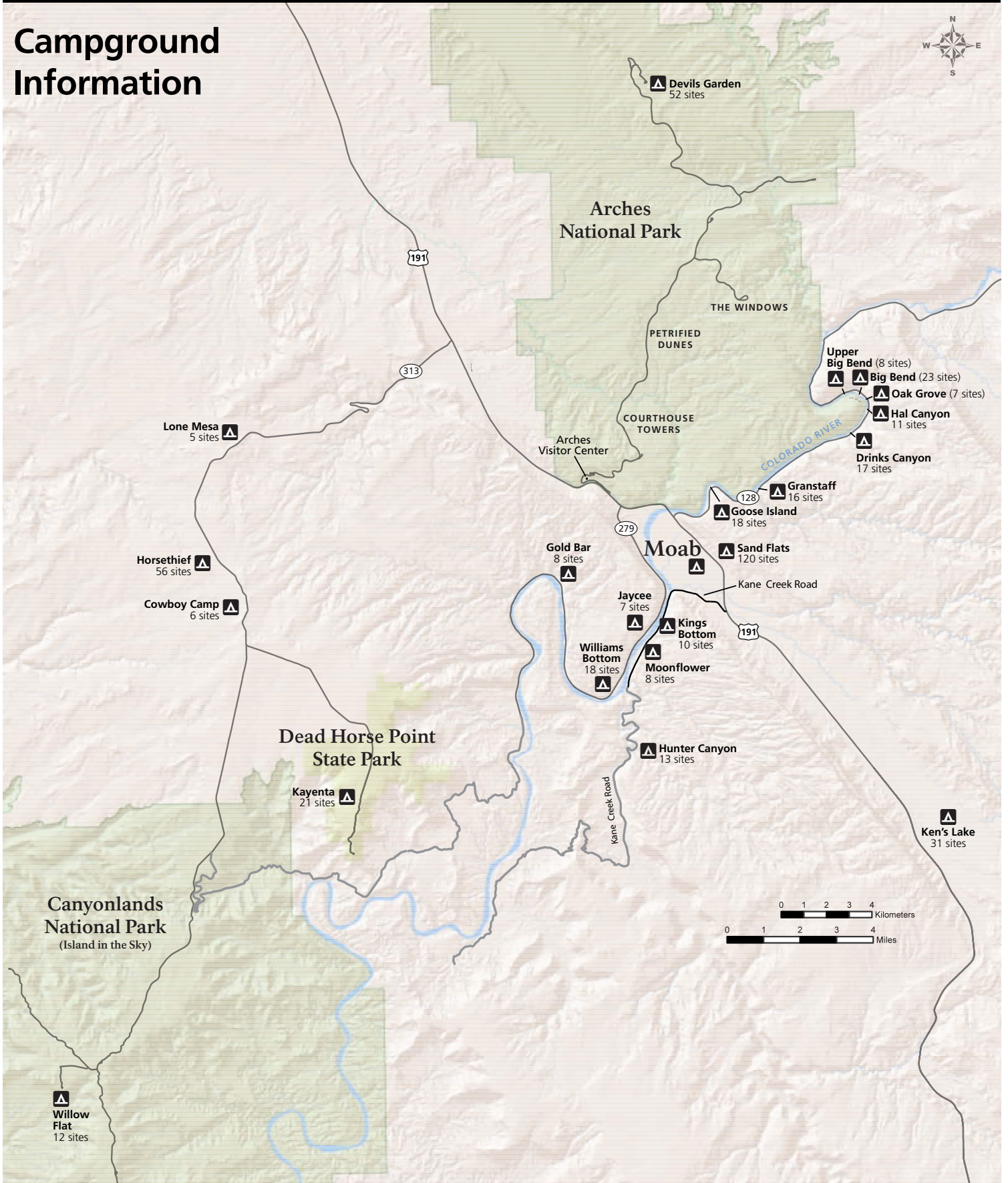
# Arches

National Park Service  
U.S. Department of the Interior

Arches National Park



## Campground Information



---

## Parks

### ARCHES

#### Devils Garden Campground

The Devils Garden Campground is located 18 miles (29 km) from the park entrance. There are 52 sites, most of which may be reserved at [www.recreation.gov](http://www.recreation.gov), or by calling (877)444-6777. Reservations must be made at least four days in advance. In the spring and fall, the campground fills very early, usually by 7:30 a.m. Facilities include potable water, picnic tables, grills, and restrooms. There are no showers.

### CANYONLANDS

#### Willow Flat Campground

The Willow Flat Campground is located 8 miles (13km) from the Island in the Sky entrance and about 35 miles (56 km) from the Arches Visitor

Center. There are 12 sites, all available on a first-come, first-served basis. In the spring and fall, the campground usually fills by noon. Facilities include picnic tables, fire rings, and vault toilets. There is no water available at the campground.

### DEAD HORSE POINT STATE PARK

#### Kayenta Campground

The Kayenta Campground is 7.5 miles (12 km) from the Dead Horse Point State Park entrance and about 30 miles (48 km) from the Arches Visitor Center. There are 21 sites available, most are reservable. Reservations must be made at least two days in advance: call (800)322-3770. In the spring and fall, the campground usually fills by noon. Facilities include potable water, picnic tables, grills, restrooms, and electrical hookups. There are no showers.

---

## Public Campgrounds

### KANE CREEK ROAD

There are three campgrounds located along Kane Creek Road. Some sites are immediately adjacent to the Colorado River, others are reached by unpaved road. These are scenic, primitive sites, with vault toilets and fire rings. All campsites are first-come, first-served. No water available.

### HIGHWAY 128

There are 12 campgrounds located along Utah Hwy 128. These sites are immediately adjacent to the Colorado River and are very scenic. In the summer, the campgrounds closest to Moab tend to fill early, but the sites farther up the road may be available later in the day. Some sites are developed, others are more primitive, but all have vault toilets and fire rings. All campsites are first-come, first-served. No water available.

### HIGHWAY 279 (POTASH ROAD)

There are three campgrounds located along Utah Hwy 279. These sites are immediately adjacent to the Colorado River and are very scenic. These sites are usually busy during the summer. Some sites are developed, others are more primitive, but all have vault toilets and fire rings. All campsites are first-come, first-served. No water available.

### HIGHWAY 313

The Horsethief Campground is located on Utah Hwy 313 – the entrance road to Canyonlands National Park and Dead Horse Point State park. There are 56 sites and it is the largest public campground in the area. All sites are first-come, first-served. Facilities include picnic tables, vault toilets, and grills. Cowboy Camp has six primitive sites that are first-come, first-served. Lone Mesa consists of five reservable group sites (minimum 10 people). No water available.

### SAND FLATS

Sand Flats has 120 campsites offered on a first-come, first serve basis. Camping is limited to designated sites. Some campsites have picnic tables, fire rings and nearby vault toilets. No water available. Reservable group sites available.

### GROUP SITES

The following public campgrounds offer sites for large groups: Goose Island, Big Bend, Goldbar and Lone Mesa. To reserve one of these sites, call the BLM at (435) 259-2100. Sand Flats also offers group sites, which may be reserved by calling (435) 259-2444. No water available.

---

## Private Campgrounds

Moab has many privately-owned campgrounds. All of them have restrooms, potable water, and showers. Most have picnic tables, dump stations, and laundry facilities. For a list of private campgrounds in the Moab area, ask for a Moab Activities Planner.